

HELP PREVENT EROSION AND RUNOFF

Disturbed ground at a construction site exposes soil to erosion and runoff. Every construction site must use BMPs to control sediment and erosion. Projects that disturb one acre or more must have a stormwater prevention plan that addresses efforts to prevent site-generated and construction-related pollutants from leaving the construction site.



STAY UP-TO-DATE

The site will be inspected a minimum of once every seven calendar days, and also within 24 hours of the end of each rain event if less than 0.5 inches fell.

For additional information
on how to keep Wichita
waterways clean please visit
TadsWater.com



Tad
Stormwater
Spokesfrog

CONTACT US

Questions about
Stormwater Utility Charges
265-1300

Report Illegal Discharges
268-4498

Storm Sewer Issues
268-4090

Recycling Questions
660-7200

Sedgwick County
Household Hazardous
Waste Facility
660-7458

Stormwater Management
City of Wichita
Public Works & Utilities Department
455 N. Main, 8th Floor
Wichita, KS 67202
(316) 268 - 4498
www.wichita.gov

Proper Placement of
Temporary BMPs

AN OUNCE OF PREVENTION IS WORTH A POUND OF CURE

It's far more efficient and
cost-effective to PREVENT
pollution than to try to
correct problems later.



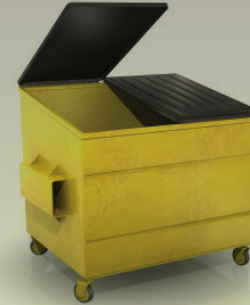
CONSTRUCTION SITE BEST MANAGEMENT PRACTICES

TO STAY IN COMPLIANCE WITH THE LAW AND KEEP YOUR PROJECT ON SCHEDULE, MAKE SURE BMPs ARE IN PLACE AND FUNCTIONING.



PERIMETER CONTROLS

- Surround the entire site.
- Avoid running over perimeter controls with vehicles or heavy equipment.
- Inspect weekly or after each rain event.



DUMPSTERS

- Close lids on dumpsters.
- Cover roll-off dumpsters with rollback tarp.
- Sweep surrounding area daily.



STORM DRAINS

- Protect storm drains at all times with perimeter controls such as gravel bags.

IMPORTANT STEPS FOR POLLUTION PREVENTION

1. Follow your Stormwater Pollution Prevention Plan. Adjust and modify BMPs as necessary SWPPP.
2. Understand Stormwater Compliance, update and manage your SWPPP to match your projects needs.
3. Install protection at inlets nearest to the construction area.
4. Contact the inspector assigned to your project to answer any questions.

BUILDING MATERIALS/ STAGING AREAS

- Keep extra absorbent materials on site to quickly pick up spills.
- Store containers and materials on pallets, rather than directly on the ground.
- Provide secondary containment when practical.



EARTH-MOVING EQUIPMENT

- Conduct maintenance of equipment on site.
- Clean up mud tracks and dirt trails left behind by vehicles.

WASHOUT AREAS

- Use a berm with an impervious liner to contain wet materials (e.g., paint, stucco, concrete) and prevent runoff in nearby areas.



DIRT AND GRADING

- Cover or spray stockpiled dirt and gravel with water to control dust.



ESTABLISH A CONSTRUCTION ENTRANCE

- Limit vehicle and equipment access to one route.
- Stabilize unpaved entrances with crushed rock.