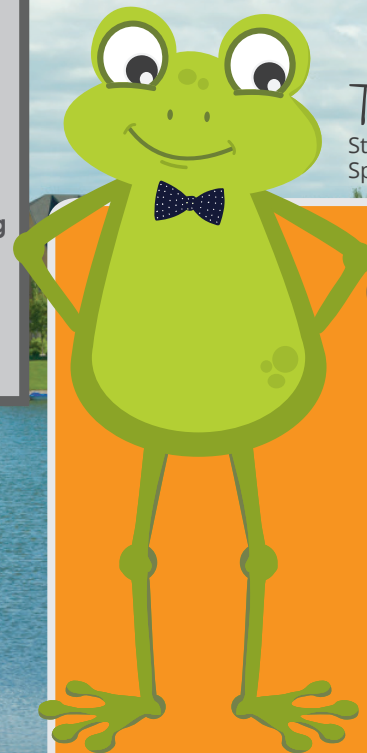


YOUR POST CONSTRUCTION BMP HELPS KEEP MY WATER CLEAN

Your property was designed and constructed with a Stormwater Management facility known as a BMP. Let's look at common examples of required periodic maintenance.

IT'S SIMPLE. YOU JUST NEED TO KNOW WHERE TO LOOK.

Any questions you have concerning required maintenance of BMPs can be answered in your Operations & Maintenance Manual.



Tad
Stormwater
Spokesfrog

CONTACT US

Questions about
Stormwater Utility Charges
265-1300

Report Illegal Discharges
268-4498

Storm Sewer Issues
268-4090

Recycling Questions
660-7200

Sedgwick County
Household Hazardous
Waste Facility
660-7458

Stormwater Management
City of Wichita
Public Works & Utilities Department
455 N. Main, 8th Floor
Wichita, KS 67202
(316) 268 - 4498
www.wichita.gov



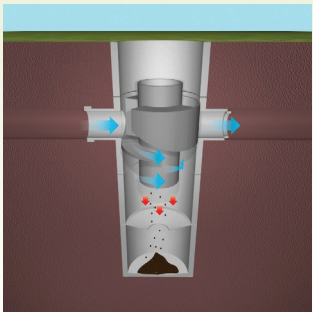
Hello HOA Boards,
Commercal Property
Owners and
Landowners with
SWM facilities



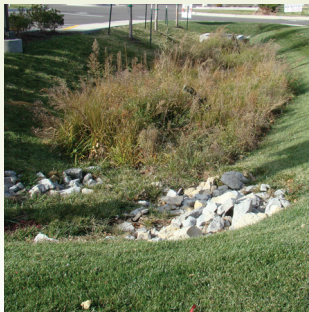
Here are some typical
BMPs you may have:



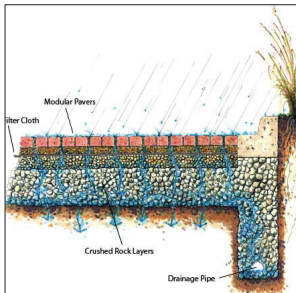
Wet Pond



Hydrodynamic Separator



Grass Filter Strip



Pervious Pavement



Rain Garden

BMP INSPECTIONS



Here are some steps to maintain compliance & keep my water clean:

1. Read your Operation & Maintenance manual for tasks & schedule
2. Inspect the BMPs
3. Document & record problems on checklist
4. Resolve all issues
5. Submit biannual inspection to City

BMP COMPLIANCE RESOURCES

- Routine inspections with grounds maintenance or appointed person.
- Biannual inspections completed by qualified person (professional engineer) or other certified professionals such as CPSEC, CPSWQ.

EXAMPLE INSPECTION LIST FOR WET PONDS



1. Trim and mow overgrown areas
2. Dispose of trash and debris
3. Remove unappealing weeds
4. Clean your gutters, pipes and drains
5. Fill in dead spots with new vegetation
6. Pick up animal waste
7. Sanitize and dispose of hazardous spills

REMEMBER:

BMPs are designed to reduce stormwater volume, peak flows, and/or nonpoint source pollution through evapotranspiration, infiltration, and detention.

The best way to mitigate stormwater impacts from new developments is to use practices to treat, store, and infiltrate runoff onsite before it can affect water bodies downstream.